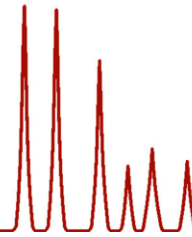


Mount Veeder Magic Vineyards  
Attn: Karen Crouse  
3379 Solano Avenue  
Suite 220  
Napa, CA 94558

Samples Received  
15 September 2011 1:47 pm  
Analysis Reported  
15 September 2011 4:20 pm

Analyte	Result	Analysis Date	Method Reference
<b>109150270</b>	<b>10-CS1</b>		
free sulfur dioxide	36 mg/L	9/15/11	A2LA Accredited Test - SOP# A024
molecular sulfur dioxide	0.33 mg/L	9/15/11	
total sulfur dioxide	56 mg/L	9/15/11	A2LA Accredited Test - SOP# A024
titratable acidity (FTIR)	6.1 g/L	9/15/11	A2LA Accredited Test - SOP# A022
pH (FTIR)	3.85	9/15/11	A2LA Accredited Test - SOP# A022
volatile acidity(acetic)	0.51 g/L	9/15/11	A2LA Accredited Test - SOP# A006
ethanol at 20C (FTIR)	15.53 % vol	9/15/11	A2LA Accredited Test - SOP# A022
ethanol at 60F (FTIR)	15.48 % vol	9/15/11	A2LA Accredited Test - SOP# A022
<b>109150271</b>	<b>10-CS2</b>		
free sulfur dioxide	29 mg/L	9/15/11	A2LA Accredited Test - SOP# A024
molecular sulfur dioxide	0.35 mg/L	9/15/11	
total sulfur dioxide	58 mg/L	9/15/11	A2LA Accredited Test - SOP# A024
titratable acidity (FTIR)	6.1 g/L	9/15/11	A2LA Accredited Test - SOP# A022
pH (FTIR)	3.72	9/15/11	A2LA Accredited Test - SOP# A022
volatile acidity(acetic)	0.48 g/L	9/15/11	A2LA Accredited Test - SOP# A006
ethanol at 20C (FTIR)	14.36 % vol	9/15/11	A2LA Accredited Test - SOP# A022
ethanol at 60F (FTIR)	14.31 % vol	9/15/11	A2LA Accredited Test - SOP# A022
<b>109150272</b>	<b>10-Merlot</b>		
free sulfur dioxide	27 mg/L	9/15/11	A2LA Accredited Test - SOP# A024
molecular sulfur dioxide	0.15 mg/L	9/15/11	
total sulfur dioxide	51 mg/L	9/15/11	A2LA Accredited Test - SOP# A024
titratable acidity (FTIR)	5.2 g/L	9/15/11	A2LA Accredited Test - SOP# A022
pH (FTIR)	4.05	9/15/11	A2LA Accredited Test - SOP# A022
volatile acidity(acetic)	0.73 g/L	9/15/11	A2LA Accredited Test - SOP# A006
ethanol at 20C (FTIR)	16.23 % vol	9/15/11	A2LA Accredited Test - SOP# A022
ethanol at 60F (FTIR)	16.18 % vol	9/15/11	A2LA Accredited Test - SOP# A022



The results in this report relate only to samples as submitted.

This report shall not be reproduced except in full, without the written approval of ETS Laboratories.

This report is intended only for the individual or entity to which it is addressed and may contain information that is privileged, confidential, and exempt from disclosure under applicable law. If the reader of this report is not the intended recipient or the person responsible for delivering this report to the intended recipient, you are hereby notified that any dissemination, distribution, or copying of this report is strictly prohibited. If you have received this report in error, please notify us immediately by telephone and return the original report to us at the address below via postal services.

Gordon Burns  
Technical Director

